



**The Clarion  
June 2020  
Calvary Presbyterian Church**

# *Birthdays & Anniversaries*

♥ Andrew & Linda Kopperud	6/6
Sue Norton	6/8
Cathy Riley	6/9
♥ Huw & Rachel Christopher	6/11
Ferne Nichols	6/11
Patrick Perry	6/12
Kayla Riley	6/12
♥ Fon & Ruth Leong	6/12
Janis Chew	6/15
♥ Bill Robertson & Peggy Tutor	6/15
Walter Smith	6/17
♥ Todd & Sharon Lyall	6/18
Rachel Christopher	6/20
Zachary Freeman	6/21
♥ Heather & Louie Cisneros	6/21
Cora Freeman	6/23
Bennett Kopperud	6/27
♥ Rod & Peggy Ingraham	6/27
♥ Orville & Carolyn Houg	6/28
♥ Forrest & Clare Baird	6/28
♥ Pat & Marie Castellano	6/29
David Riley	6/30



## Presbyterian Corner Our faith, our practice, and our roots

### What do we sin?

There is no correct reason to explain why people sin. We've all had this experiences: we know what is right, but we don't do it. For no apparent "reason", we turn away from the good and embrace the bad. We turn from what we know is God's will to do what we know is wrong or sinful in God's sight.

This is sometimes called the "riddle of sin." There are no good grounds or sensible motives for humans sin. Sin is a rebellion against God, braking God's laws, asserting our own wills over God's will. Yet we know that sin is senseless. It does not ultimately help us—it further ruptures our relationship with God. Yet, sin we do. Even Paul confessed. "I do not the good I want, but the evil I do not want is what I do" (Rom. 7:19).

This enigma of human sinning is seen in the story of Adam and Eve in the Garden of Eden. There were enjoyed complete delight. The had an uninterrupted relationship with their creator. All their need were me; they were in "paradise." The only stipulation was that they obey God's command not to eat from "the tree of the knowledge of good and evil" (Genesis 2:15-17). Yet this is what happened. Adam and Eve disobeyed God. There were tempted by the serpent, ate from the tree, and then faced the consequences; they were banished from the garden and lost its benefits, including their perfect relationship with God. Finally they met death for their actions—even as we do today as humans beings.

We still sin. Theologically, Presbyterians believe we have inherited "original sin," so that we are all sinners by nature. But the prior question of why any human should want to sin is still an enigma. Sin is senseless. The is no meaning to be found to make sin "explicable." We see the stupidity of sin and its results when Jesus said to those who put him to death ( and to all of us as sinners): "They hated me without a cause" (John 15:25; Ps. 69:4).

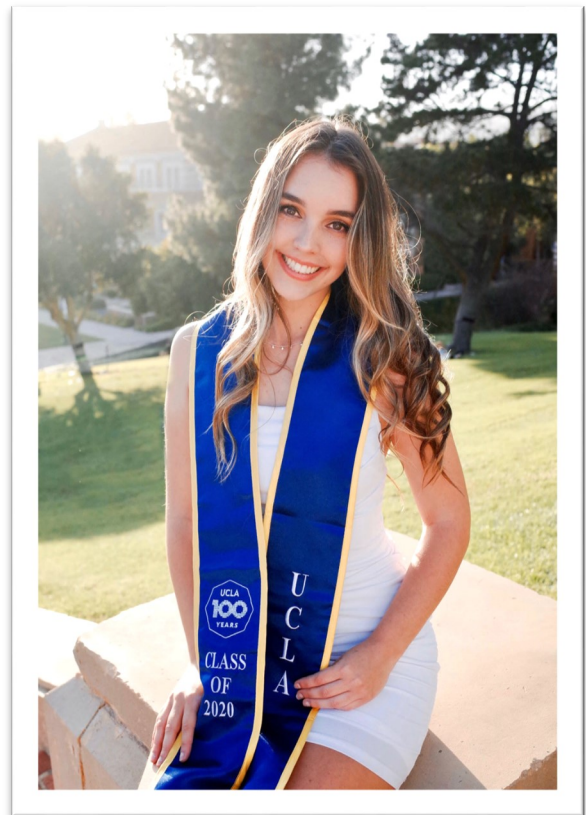
There is no self-excuse for sin. By seeking as reason or trying to explain our motives, we aim to deflect our blame or shift responsibility off our shoulders. In the face of this, there is one path. We can only confess our sins, admit our guilt, renounce our actions, and turn to God in repentance and trust. For God loves us and will "abundantly pardon" (Isa. 55:7).

# Congratulations!



Congratulations to Rev.  
Priscilla Ngunju  
for graduating this  
May with a Masters of Arts  
in Theology from  
Fuller Theological Seminary!

We are so proud of you!



Congratulations to our very  
own Avery Douglas  
for graduating in May with  
a Bachelor of Arts in  
psychology!

We are so proud of you!



# Gentleness in the time of COVID - 19

Memory Verse: “Let your gentleness be made known to everyone. The Lord is near.”

- Philippians 4:5

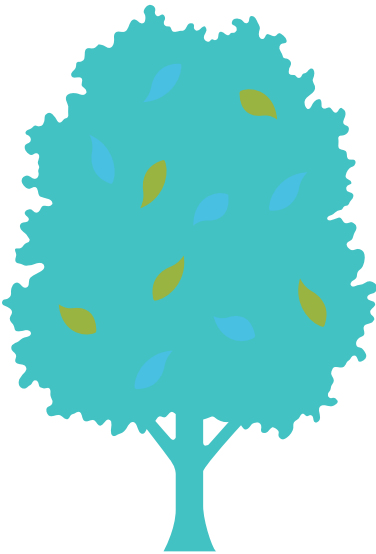
Challenging times can bring out the worst in us. We are generally polite and respectful people but in crisis, it’s easy to become harsh and critical. Tension right now is understandable and honestly, to be expected. That being said, Christians are called to a higher way of being. Because of Christ, we are called to the way of love no matter what our circumstances.

## Competing Worldviews

The loving way of Christ can be very difficult when we see things differently than others. Doing “what Jesus would do” is hardly easy. However, seeking to understand the people we feel in conflict with can truly help.

So much tension arises from competing worldviews. Whether we are dealing with social distancing, which political candidate to vote for or even what to order for dinner. Your worldview, the framework by which you look at the world, stems from many factors that were out of your control: where you grew up, *when* you grew up, your race, class, gender, etc. Other examples of factors that shape your worldview are the jobs you have had, the neighborhood you can afford to live in, the coping mechanisms you have found helpful and the people you have chosen as friends.

How each individual sees the world is personal and so *different*. For this reason we must all work towards understanding the factors that have shaped each persons worldview if we are going to cultivate peace and connection and follow the example of Christ.



Memory Verse: "Let your gentleness be made known to everyone. The Lord is near."

- Philippians 4:5

While in prison, Paul encouraged the Philippians to, "Let your gentleness be made known to everyone." (4:5). He describes gentleness as one of the fruits of the Spirit in Galatians 5. In the book of Colossians, Paul reminds the church they are "God's chosen ones, holy and beloved" therefore they should "clothe [themselves] with compassion, kindness, humility, meekness and patience."

A gentle and kind disposition should be the mark of every Christian. Having a gentleness that is "known to everyone" means being the kind of person that *no matter what*, people can expect you to be understanding and kind - even if you disagree.

I have found that the easiest way to help myself be gentle is to take steps towards understanding the person I am in conflict with. When we have competing world views, I try my best to take time to learn where the other person has experienced pain or oppression. *What do they define as unjust? What feels wrong to them? And is this something I can understand or agree with? If not, do I at least understand the root need not being met under their response or behavior?*

Another thing I try to do is remember God's gentleness toward me. When I have been weak, God has been strong. When I was lost, God's Spirit guided me through the advice and tenderness of others. When I have been wrong, God's gentle tap on my heart has helped me to see my error and course correct my behavior.

Calvary, when competing world views tempt us to be harsh and overly critical, let us remember Jesus' gentleness toward us. Let us allow God to make us a people marked by gentleness. Let us follow the example of Jesus and make our gentleness known to all, for God is here and God is with us.



# Ashley's Book Club

## Difficult Conversations: How to Discuss What Matters Most

*By Douglas Stone, Bruce Patton, and Sheila Heen*

The older I get the more I realize how important communication is. How I speak to the barista at Starbucks or the mechanic telling me I need new brakes is just as important as how I speak to someone I love. The strength of my relationships is heavily based on the strength of my communication skills.

This is why *Difficult Conversations* by Douglas Stone, Bruce Patton and Sheila Heen is so important. This book has helped me to understand what the authors describe as a “learning conversation.” They walk through how to “listen from the inside out” and how to know “when to raise it and when to let it go.” They go through several scenarios and unpack why it’s so hard to put down our pride and listen to others. In a culture where it is so easy to fall into the expert trap (where everyone thinks they are the expert of other people’s problems) we need more and more help building the skills necessary to love and care for each other well.

From the time we were children, we were taught that *it’s not what you say it’s how you say it* and so we focus on how to make someone else comfortable even if it means curbing our true feelings or thoughts about a situation. What we haven’t been taught is how to have those difficult conversations in a way that makes both parties feel seen and heard. In turn, this solves difficult problems in a mutually beneficial way. *Difficult Conversations* fills that need and helps both people to really connect and communicate in an effective way.

I hope you will join me this month in reading this great book on communication. I pray that it will be as helpful to you as it was to me.

Memory Verse: “Let your gentleness be made known to everyone. The Lord is near.”

- Philippians 4:5

# ***MISSION CORNER***

While staying

Safer At Home

you can still help the Mission Committee with our ongoing projects:

When you shop, clean your closets, or place online orders remember

our partners:

Ask your friends to collect too!

## **Little Free Pantry**

Food items that do not need refrigeration. You may place them directly in the pantry (corner of Fremont & Oxley) Or call for pick up at your house.

## **Angel Interfaith Network &**

### **San Fernando Valley Refugee Children center**

Hygiene supplies: soap, washcloths, shampoo, conditioner, hairbrush, comb, deodorant, toothbrush, toothpaste, and all sizes of socks

(Full size, travel size and hotel size all welcome)

## **Monte Vista Street Elementary School**

School Supplies: backpacks, pens, pencils, crayons. Colored pencils, markers, paper, notebooks, binders, pencil cases, scissors, rulers

## **Operation Christmas Child**

Small toys, hygiene items, school supplies, clothing, flipflops, socks

For any of these items if you would like to have a pickup at your house please call the church office and we will arrange the pickup.



SAVE THE DATE!  
DESSERT AND DISCUSSION  
SUNDAY JUNE 28  
VIA ZOOM FOR NOW...

***The U.S. Southern Border:  
What is Happening and How Presbyterians Can Respond***



In late February, Megan, Linda and Rebecca traveled with people from across the US to Tijuana, Mexico. They will join us on Zoom, share photos, present what they learned, what impacted them, and possible paths forward for Calvary to be more involved with this issue.

The Presbyterian Hunger Program awarded Congregational Emergency Food Grants of \$1,000 to two congregations in each of PC (USA)'s 16 synods. These grants are to assist in responding to the urgent needs in communities presented by the COVID-19 crisis.

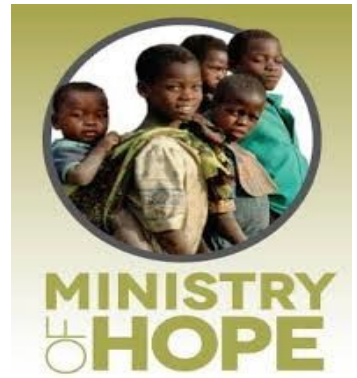
Calvary applied for and was given one of these grants! We are one of the two churches in the Synod of Southern California and Hawaii to receive this aid!

In our grant we expressed the desire to help our partners while also supporting the local economy and jobs supported by restaurants. We partnered with a small family run restaurant and have delivered tasty Mexican food dinners to the Union Station Adult Center, and the Family Center. We have a future date with the Family Center and are working with Crossroads to provide a meal.



## Ministry of Hope, Malawi Covid-19 Update

Ministry of Hope was planning the celebration of their 20<sup>th</sup> anniversary this year. As with other special occasions, Covid-19 has forced the delay of this celebration. Ministry of Hope started as community-based orphan care and has grown to encompass several other areas of support. Calvary has partnered with MOH by providing educational scholarships for children to continue their education through high school.



**Schools** in Malawi are closed as they are across the US. Distance learning is not possible, teachers and children do not have computer access (most do not have electricity). The libraries at the Ministry of Hope community centers are open and busy! This highlights the need of the libraries to purchase textbooks. Children in Malawi do not have copies of their textbooks, usually there is only 1 book per class for the teacher (with around 150 students).



The **Mobile Medical Clinics** have been cancelled, as there is worry that large gatherings of people for the medical clinics would spread Covid-19 rapidly. Medications are being delivered (within the rules of the Malawi Board of Pharmacy) to the village chiefs for distribution to people with chronic conditions.

The **Crisis Nursery** has asked their caregivers to live at the nursery to reduce potential infection through travel to and from work on crowded public transportation. The nursery is trying to stock up on needed baby formula and other essentials as disruption of supply chains to Malawi are likely.



For more information visit: <http://www.ministryofhope.org/news.html>

# Generations at Calvary

**Vacation Bible School**  
ONLINE

**KONNECT**  
*Friendship and Community Service*

Sign Up!  
Contact:  
Ashley  
818-934-6908  
Email:  
[ashley@cpcsouthpas.org](mailto:ashley@cpcsouthpas.org)

**July 27-31st**

## Vacation Bible School

This year at Calvary's Vacation Bible School, we are going to "KONNECT" around friendship, community service and Jesus' call to love our neighbor.

# Generations at Calvary



## **Sunday School at Calvary**

Sunday School classes for kindergarten through fifth Graders are offered every Sunday from 1-2pm starting June 7th. There will be no Sunday School July 5th to celebrate our nation.

We are excited to be using [Whirl](#) curriculum. This summer, Sunday School will meet on Zoom.

<https://us02web.zoom.us/j/84352295570>

Meeting ID: 843 5229 5570

Have a question about children and youth events? Contact the Ashley at [ashley@cpcsouthpas.org](mailto:ashley@cpcsouthpas.org)



### **Teen Girls Small Group**

A safe and fun place for young women in middle and high school to talk about friendship, growing up and faith.



### **Youth Group Sunday Nights**

Starting in June, middle and high school boys and girls of Calvary are invited to come together on Zoom as we go through a 4 week curriculum on finding peace in Christ an anxious world. Our youth group will meet Sunday nights from 7-8pm. This amazing curriculum is brought to us by Fuller Youth Institute.



## Network Partners:

**St. Matthew's Episcopal Church** in Pacific Palisades did not let the pandemic stop them from providing neighbor to neighbor support! They held a **Virtual Fundraiser** and sent a check for \$2,500 to Angel Interfaith Network to buy Food Cards for patients in need.



## Those We Serve:

**Regina** is a patient who has not been able to work as a vendor due to her compromised health condition. **She** is dealing with stress of not having enough money for food or rent. Her husband is only given 4 hours a day as a dishwasher at a local restaurant due to COVID 19 pandemic. Fortunately, Angel Interfaith Network was able to provide assistance.

**Jessie** is a 3-month-old baby who was seen for a routine checkup at our preemie clinic. His father is a day laborer and is losing a lot of work due to the COVID-19 and was short of enough to pay the rent. He is the sole provider of a family of 6. Angel Interfaith Network was able to grant the request for rental assistance, thanks to our generous donors.

**Lee** is a 3-month-old baby involved in a car accident with his mother. His mother suffered minor injuries, Lee has a skull fracture. His mother is at his bedside in the pediatric unit in the hospital. His mother recently came to this country and supported by her family in China. The Social worker is requesting some immediate needs for Lee - Pampers, wipes and clothing. She is also assisting Lee's mother in finding other resources to support her through this crisis.

## Urgent Needs:

Infant socks,  baby wash,  car seats,  men's clothes  and  and  donation for rent and food assistance.



Become a Sustaining Angel:  
<http://angelinterfaith.net/sustainers.html>

# DID YOU KNOW?



Calvary is having Bible Study Zoom meetings every  
Friday at 3 pm. Please join us!

<https://us04web.zoom.us/j/6759828821>

Meeting ID: 675 982 8821

There was no Session Meeting in May

## May Financials

May Budgeted Income \$16,066.67  
May Actual Income \$20,660.07  
May Budgeted Expense \$37,037.74  
May Actual Expense \$41,357.65  
May Food Bank Expenses: \$0.00

\*These amounts reflect the operating budget only. Income numbers are purely from Sunday offering. Investment and property numbers are not included.

Calvary Presbyterian Church  
1050 Fremont Avenue  
South Pasadena, CA 91030  
(626) 799-7148  
[www.cpcsouthpas.org](http://www.cpcsouthpas.org)

Sunday Worship:  
Traditional: 10 am in the Sanctuary  
Informal: 11 am in Fellowship Hall

The Rev. Millason Dailey  
[millason@cpcsouthpas.org](mailto:millason@cpcsouthpas.org)

Maribel Valadez  
Office Administrator  
[cpc.southpas@gmail.com](mailto:cpc.southpas@gmail.com)

Church Office Hours:  
9 am - 5 pm, Monday - Friday